

# ImpoProof

BY HYPHEN



## IMPOPROOF T-Jet

### Automated Double Sided Imposition Proofer

The ImpoProof has earned a reputation as the premier double-sided proofing solution in the world. With new Epson SureColor T Series printer performance and still using our unique registration system, the ImpoProof is still the industry leader in speed, quality, accuracy and reliability. Available in T7270 (44"), T5270 (36") and T3270 (24")

**It is fast.** You can achieve a top-end speed of 23 A1 proofs per hour at 720x720 dpi and up to 50 at 360 x 720 dpi..

**It is accurate.** The time-tested camera registration system has made the ImpoProof, without question, the industry leader in repeatability with a +/-1MM registration tolerance.

**It is profitable.** As a fully-automated solution, ImpoProof achieves an unmatched level of efficiency with the least amount of operator involvement. And the combination of superior ink yield and a cost-effective list of certified papers guarantee the industry's lowest cost per double-sided proof.

Fast, Accurate...Profit!

Fast, Accurate...Profit!

# ImpoProof

BY HYPHEN

## Technical Specifications

- Automatic double sided printing.  
No operator intervention required.
- Camera registration system  
achieves highest possible accuracy
- Up to 23 proofs per hour at 720 dpi. Up to 50  
per hour at 360 x 720 dpi.
- Also available for the 44" Canon iPF8400S &  
60" iPF 9400S printers.

### Printing Technologies

2 - Epson SureColor Tx270 Inkjet Printers  
**(ImpoProof T-Jet - 44", 36", 24**  
2 - Canon iPF 4000S Inkjet Printers  
**(ImpoProof 4000S - 44")**  
2 - Canon iPF 6000S Inkjet Printers  
**(ImpoProof 6000S - 60")**

### Resolution

720 x 720 dpi  
360 x 720 dpi

### Print Modes

Draft, Normal and High Quality

### Inks

150 ml, 350 ml and 700 ml ink cartridges.  
5 colors - C,M,Y,PK and MBK

### USB2

### Media Feed Type

Paper Rolls

### Media Width

787.4 mm (31")

### Media Length

91 m (300')

### Media Weights

Coated and Uncoated Papers from  
14# to 24# are acceptable.

### Input Formats

Can be connected to all known PrePress Workflows.

### Electrical Requirements

100-120 VAC

### Environment

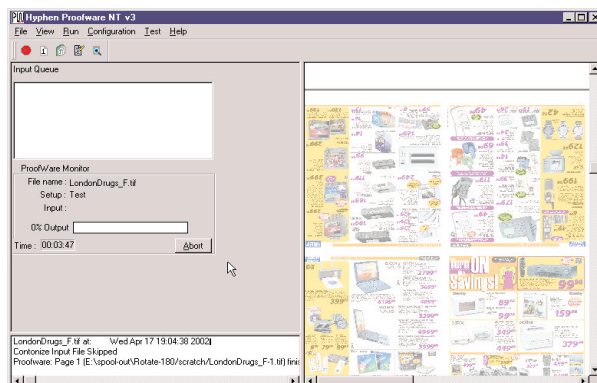
Printing Range - 59° F to 95° F / RH 20% to 80%  
Optimal Range - 72° F to 79° F / RH 30% to 60%

### Dimensions

56" wide by 67" tall by 52" deep (+ computer)  
Weight is approximately 450 lbs. assembled.  
**(ImpoProof T5000)**

### Other Requirements

Windows 7 & 8 Professional Computer



ImpoProof's proprietary ImageProcessor Module (above) accepts the widest range of file formats. The onscreen preview of your form is a standard feature, which can reduce costly errors. The ink reduction, color calibration and superior screening technology features are integral to producing the highest quality proofs.

Distributed by:

**FLASHLIGHT**  
**Digital**

Phone: (800) 353-5546  
johnm@impoproof.com  
www.impoproof.com

**HYPHEN-**